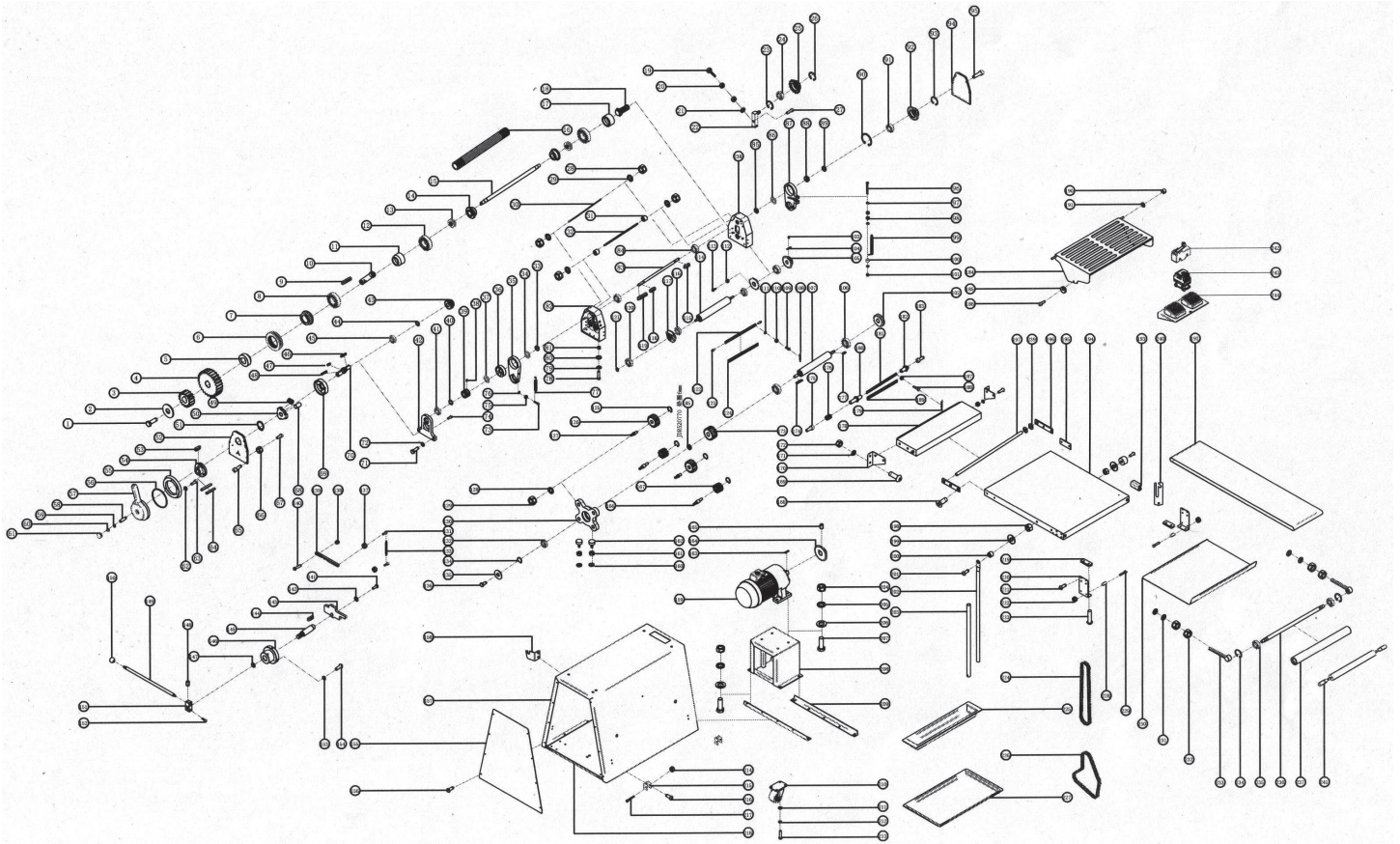


Parts Breakdown

Model BE-CN-2083-FSS 44135



Parts Breakdown

Model BE-CN-2083-FSS 44135

Item No.	Description	Position	Item No.	Description	Position	Item No.	Description	Position
AD197	Outer Hexagon Screw Arbor for 44135	1	AD219	Brake Apparatus Gear for 44135	43	66729	Washer for 44135	85
AD198	Flat Gasket for 44135	2	AD220	Washer (ø22xø32x3mm) for 44135	44	AD214	Flat Gasket for 44135	86
66749	Gear (M3 15T) for 44135	3	66742	Bearing for 44135	45	AD245	Roller Adjusting Block for 44135	87
66748	Gear (M3 27T) for 44135	4	AD221	Flat Key (Type C) for 44135	46	66730	Eccentric Mounting for 44135	88
66746	Washer for 44135	5	AD222	Flat Key (Type A) for 44135	47	66729	Washer for 44135	89
66747	Bearing for 44135	6	AD223	Flat Key (Type A) for 44135	48	AD246	Clamp Spring for Hole Use for 44135	90
66785	Bearing Sleeve for 44135	7	AD224	Spring for 44135	49	66689	Bearing for 44135	91
66784	Bearing for 44135	8	AD225	Brake Apparatus for 44135	50	AD247	Chain Wheel (M3 21T) for 44135	92
AD199	Flat Key (Type C) for 44135	9	AD226	Clamp Spring for Shaft Use for 44135	51	AD248	Clamp Spring for Shaft Use for 44135	93
44797	Shaft for 44135	10	66714	Cover for 44135	52	66810	Cover for 44135	94
66781	Bearing Sleeve for 44135	11	AD227	Flat Key (Type A) for 44135	53	AD235	Inner Hexagon Bolt for 44135	95
AD200	Bearing for 44135	12	AD228	Brake Apparatus Rotating Disc for 44135	54	AD249	Outer Hexagon Bolt for 44135	96
AD201	Thrust Bearing for 44135	13	AD229	Dial Disc for 44135	55	AD198	Flat Gasket for 44135	97
AD202	Aluminum Block for 44135	14	AD230	Seal Ring for 44135	56	66835	Nut for 44135	98
AD203	Roller Shaft for 44135	15	66690	Adjusting Plate for 44135	57	AD250	Draw Spring for 44135	99
44800	Active Roller for 44135	16	66790	Screw for 44135	58	AD198	Flat Gasket for 44135	100
AD204	Bearing Holder for 44135	17	AD207	Lockwasher for 44135	59	66835	Nut for 44135	101
AD205	Adjusting Bolt for 44135	18	66707	Soft Hat for 44135	60	AD251	Chain Wheel for 44135	102
AD206	Rubber Head Screw for 44135	19	AD231	Buckle Head for 44135	61	AD215	Tighten Screw for 44135	103
66795	Nut for 44135	20	AD232	Lockwasher for 44135	62	AD252	Flat Key (Type C) for 44135	104
AD207	Lockwasher for 44135	21	AD233	Inner Hexagon Bolt for 44135	63	66808	Gear (18T) for 44135	105
AD208	Fixed Axis for 44135	22	AD234	5x30 Split Pin for 44135	64	66772	Bearing for 44135	106
AD209	Clamp Spring for Hole Use for 44135	23	AD235	Inner Hexagon Bolt for 44135	65	66774	Lower Roller for 44135	107
AD210	Bearing for 44135	24	66818	Soft Hat for 44135	66	AD253	Draw Spring for Upper Scraper for 44135	108
AD211	Chain Wheel for 44135	25	66770	Screw for 44135	67	AD254	Cross Head Bolt for 44135	109
AD212	Clamp Spring for Shaft Use for 44135	26	AD236	Brake Apparatus Cylinder for 44135	68	66818	Soft Hat for 44135	110
66708	Screw for 44135	27	AD237	Brake Apparatus Fixed Seat for 44135	69	AD255	Lockwasher for 44135	111
66795	Nut for 44135	28	AD238	Brake Apparatus Rotating Shaft for 44135	70	AD256	Nut for 44135	112
AD207	Lockwasher for 44135	29	AD239	Outer Hexagon Bolt for 44135	71	AD257	Inner Hexagon Head Screw for 44135	113
AD213	Tooth Bar for 44135	30	AD207	Lockwasher for 44135	72	66771	Upper Roller for 44135	114
66759	Rubber Sleeve for 44135	31	AD240	Inner Hexagon Bolt for 44135	73	AD227	Flat Key (Type A) for 44135	115
66758	Fixed Lever for 44135	32	AD241	Inner Hexagon Bolt for 44135	74	66689	Bearing for 44135	116
66729	Washer for 44135	33	66835	Nut for 44135	75	66765	Roller Adjusting Block for 44135	117
AD214	Flat Gasket for 44135	34	AD198	Flat Gasket for 44135	76	AD227	Flat Key (Type A) for 44135	118
66731	Roller Adjusting Block for 44135	35	AD242	Draw Spring for 44135	77	AD221	Flat Key (Type C) for 44135	119
66730	Eccentric Mounting for 44135	36	AD243	Outer Hexagon Bolt for 44135	78	66689	Bearing for 44135	120
AD214	Flat Gasket for 44135	37	AD244	Flat Gasket for 44135	79	AD258	Clamp Spring for Shaft Use for 44135	121
AD215	Tighten Screw for 44135	38	AD244	Flat Gasket for 44135	80	AD259	Upper Scraper Holder for 44135	122
AD216	Brake Apparatus Gear for 44135	39	66801	Soft Hat for 44135	81	AD260	Dowel Pin for 44135	123
AD217	Washer (3mm) for 44135	40	66783	Base for 44135	82	66822	Upper Knife for 44135	124
66742	Bearing for 44135	41	66763	Shaft for 44135	83	AD261	Circlip for 44135	125
AD218	Brake Apparatus Bearing Fixed Seat for 44135	42	66689	Bearing for 44135	84	66737	Gear (M3 15T) for 44135	126

Parts Breakdown

Model BE-CN-2083-FSS 44135

Item No.	Description	Position	Item No.	Description	Position	Item No.	Description	Position
66738	Upper Plastic Gear Shaft for 44135	127	66753	Gear (M3 10T) for 44135	167	AD283	Outer Hexagon Screw for 44135	207
AD207	Lockwasher for 44135	128	AD274	Cross Countersunk Screw for 44135	168	AD284	Motor Fixed Seat for 44135	208
66795	Nut for 44135	129	AD274	Cross Countersunk Screw for 44135	169	AD285	Fixed Rack for 44135	209
66739	Adjusting Block for 44135	130	66797	Fixed Plate for 44135	170	AD286	Brake and Active Caster for 44135	210
AD257	Inner Hexagon Head Screw for 44135	131	AD207	Lockwasher for 44135	171	AD198	Flat Gasket for 44135	211
66742	Bearing for 44135	132	66795	Nut for 44135	172	AD198	Flat Gasket for 44135	212
AD262	Draw Spring for 44135	133	66752	Gear (M3 24T) for 44135	173	AD265	Inner Hexagon Head Screw for 44135	213
AD246	Clamp Spring for Hole Use for 44135	134	AD223	Flat Key (Type A) for 44135	174	66835	Nut for 44135	214
AD207	Lockwasher for 44135	135	AD275	Inner Hexagon Screw for 44135	175	AD287	Supporting Rack for 44135	215
AD263	Outer Hexagon Bolt for 44135	136	AD276	Compression Spring for 44135	176	66770	Screw for 44135	216
AD256	Nut for 44135	137	AD252	Flat Key (Type C) for 44135	177	AD288	Outer Hexagon Bolt for 44135	217
66835	Nut for 44135	138	66796	Bracket Support Plate for 44135	178	AD289	Bottom Plate for 44135	218
AD264	Cam Bar for 44135	139	66786	Draw Spring for 44135	179	AD290	Al. Pad Block for Tray Bar for 44135	219
AD265	Inner Hexagon Head Screw for 44135	140	AD277	Dowel Pin for 44135	180	AD291	Fixed Plate for Tray Bar for 44135	220
AD197	Outer Hexagon Screw Arbor for 44135	141	66823	Lower Knife Sleeve for 44135	181	AD292	Inner Hexagon Head Screw for 44135	221
AD198	Flat Gasket for 44135	142	AD278	Dowel Pin for 44135	182	66835	Nut for 44135	222
66728	Adjusting Sheet for 44135	143	AD275	Inner Hexagon Screw for 44135	183	AD292	Inner Hexagon Head Screw for 44135	223
AD222	Flat Key (Type A) for 44135	144	66815	Safety Guard for 44135	184	AD293	Chain for 44135	224
66700	Shaft for 44135	145	66817	Safety Guard Rubber Roller for 44135	185	66814	Flour Tray for 44135	225
66701	Permanent Seat for 44135	146	66770	Screw for 44135	186	AD294	Chain for 44135	226
AD266	Flat Gasket for 44135	147	66818	Soft Hat for 44135	187	66831	Flour Plate for 44135	227
AD267	Tighten Screw for 44135	148	AD269	Cross Head Screw for 44135	188	AD295	Rubber Wheel for 44135	228
66709	Adjusting Lever for 44135	149	66824	Lower Knife for 44135	189	AD254	Cross Head Bolt for 44135	229
AD268	Black Plastic Ball for 44135	150	66816	Microswitch Sleeve for 44135	190	66830	Tray Bar for 44135	230
66706	Adjusting Seat for 44135	151	AD207	Lockwasher for 44135	191	AD266	Flat Gasket for 44135	231
AD240	Inner Hexagon Bolt for 44135	152	AD279	Conveyor Belt for 44135	192	66805	Nut for 44135	232
AD198	Flat Gasket for 44135	153	AD280	Big Supporting Plate Fixed Seat for 44135	193	66806	Adjusting Lever for 44135	233
AD197	Outer Hexagon Screw Arbor for 44135	154	66826	Bracket Board for 44135	194	AD258	Clamp Spring for Shaft Use for 44135	234
66756	Cover for 44135	155	AD281	Screw Arbor Fixed Lever for 44135	195	66784	Bearing for 44135	235
AD269	Cross Head Screw for 44135	156	66800	Link Block for 44135	196	66829	Active Shaft for 44135	236
66755	Base for 44135	157	66825	Shaft for 44135	197	66828	Conveyor Roller for 44135	237
AD270	Fixed Rack for Rolling Pin for 44135	158	66707	Soft Hat for 44135	198	66769	Base for 44135	238
AD271	Motor for 44135	159	AD207	Lockwasher for 44135	199	AD296	Spacer for 44135	239
AD198	Flat Gasket for 44135	160	AD282	Active Lever Holder for 44135	200	AD297	Fixed Seat for Rolling Pin for 44135	240
66835	Nut for 44135	161	66708	Screw for 44135	201	AD065	Rolling Pin for 44135	241
AD272	Rubber Head Screw for 44135	162	66802	Active Lever for 44135	202	AD298	Microswitch for 44135	242
AD273	Flat Key (Type C) for 44135	163	66803	Fixed Lever for 44135	203	AD299	AC Contactor for 44135	243
66809	Gear (24T) for 44135	164	66801	Soft Hat for 44135	204	AD300	Foot Pedal for 44135	244
AD215	Tighten Screw for 44135	165	AD244	Flat Gasket for 44135	205	61424	Emergency Stop Button for 44135	
66754	Lower Plastic Gear Shaft for 44135	166	AD244	Flat Gasket for 44135	206			